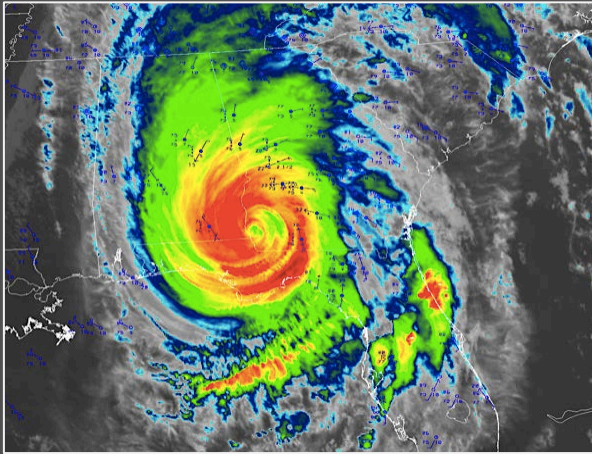


2019 Tornado and Severe Flooding in Georgia



Tornado and flooding hit middle Georgia.



VFH Turbine™ and public observation deck before flooding.



River rose over 30 ft. and left a mess.

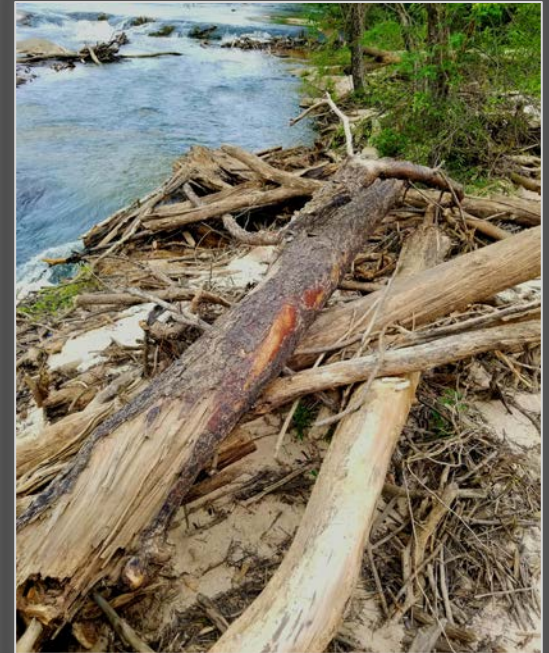


VFH Turbine™ was 18ft. under water.

VFH Turbine™ is built to withstand Mother Nature

River levels swelled by over 30 ft. in many areas and resulted in massive destruction along miles of shoreline. Buildings were damaged, roads washed out, and trees toppled, while the river's existing logs, debris and silt will change the shoreline landscape and properties for decades. For employee safety, the immediate area around the turbine will be cleared, so power generation can resume ASAP.

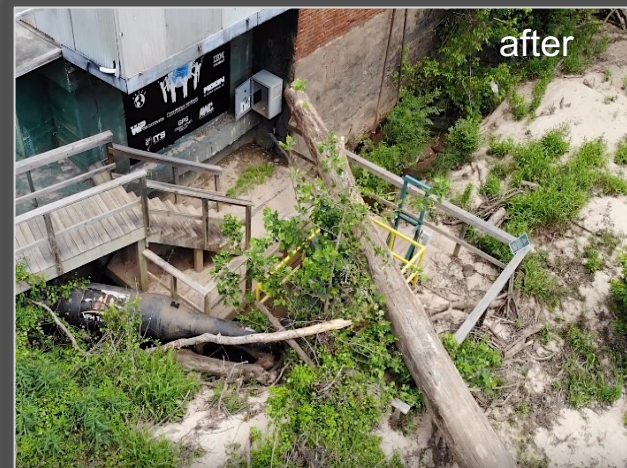
The VFH Turbine™ is built, engineered and designed to withstand hurricanes, tornadoes and flooding. While the non-essential wooden observation deck sustained some minor damage, the hydro system experienced only a cracked generator rain cover, but no structural harm. The turbine cosmetic repair is \$580 and the system will be fully operational in less than 2 days.



Surviving the elements and disasters



Hundreds of logs, sticks and river debris need to be removed for public safety. The river CFS increased from a normal 650 CFS to over 22,000 CFS.



Silt and sand filled in areas around the turbine and discharge channel but the energy production system can be operational and supplying power to the grid within 48 hours.